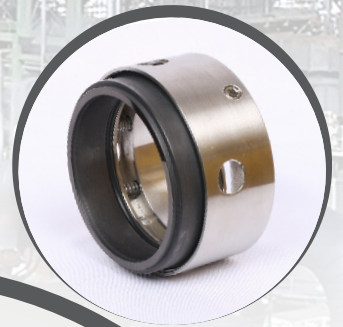
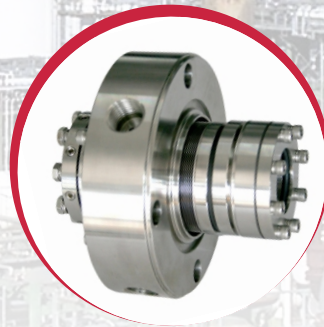




**SALSON**<sup>TM</sup>  
**SEALS**

**Mechanical Seals Manufacturer**





**SALSON**<sup>TM</sup>  
**SEALS**

## ABOUT US

### Mechanical Seals, Rotary joints & Rotary unions Manufacturer

**Salson Seals** is the fastest growing & emerging Mechanical Seals & Rotary Joints manufacturer and leading supplier across the country. High skilled engineers with intense knowledge and vast experience has supported the company to acquire the eminent position among the most reliable Manufacturers of mechanical seals & rotary joints in entire India.

We are introducing our self as one of the most reliable Manufacturer of Mechanical shaft, seals for pump, Rotary Joints, Rotary Unions, Agitator & mixers any parts of Rubber, Teflon & Grafoil & S.S. job as per your required size even from your provided sample in various sizes.

We supply & Development Mechanical Seal for **Petrochemical, Refinery, Paper Mill, Oil Mill, Textile Mills, Chemical Plant, Pharmaceutical Plant, Steel Plant, Paint Industries, Milk Dairy's etc.** We can comply to any of your quick timely requirement. We enclose our product glimpse to get a brief idea for our establishments for further enquiry & information feel free to have a word with us.

#### **Our Mission / Vision :**

“

*To be the best & leading in mechanical seals through providing unmatched quality & excellence. Quality is one word ethics for us, we never compromise over quality while executing our each product.*

”

We would like receive valuable enquiries, orders for repairing, Servicing, fresh mechanical seals & its spare .

Thanks & Regards,

## TEFLON BELLOW



### FEATURES

Maintenance free, Leak Proof, Optimum thickness, Inside Mounted

#### OPERATING LIMITS

SHAFT DIA	10mm to 70mm
PRESSURE	10 bar
TEMPERATURE	-20C to 180C
SPEED	2900 RPM(max)

#### SEAL FACE MATERIAL

Carbon, Silicon Carbide, Tungsten Carbide, Ceramic (99.5%), Stellite.

#### SECONDARY SEALING

E.P.D.M., TTV, GFT, SILICON, VITON, PTFE, NEOPRENE.

#### METAL COMPONENTS

E.P.D.M., TTV, GFT, SILICON, VITON, PTFE, NEOPRENE.

### FEATURES

Maintenance free, Leak Proof, Optimum thickness, Inside Mounted

#### OPERATING LIMITS

SHAFT DIA	10mm to 70mm
PRESSURE	10 bar
TEMPERATURE	-20C to 180C
SPEED	2900 RPM(max)

#### SEAL FACE MATERIAL

Carbon, Silicon Carbide, Tungsten Carbide, Ceramic (99.5%), Stellite.

#### SECONDARY SEALING

E.P.D.M., TTV, GFT, SILICON, VITON, PTFE, NEOPRENE.

#### METAL COMPONENTS

E.P.D.M., TTV, GFT, SILICON, VITON, PTFE, NEOPRENE.

## CONICAL SPRING



## MULTI SPRING



### FEATURES

Maintenance free, Leak Proof, Optimum thickness, Inside Mounted

#### OPERATING LIMITS

SHAFT DIA	10mm to 70mm
PRESSURE	10 bar
TEMPERATURE	-20C to 180C
SPEED	2900 RPM(max)

#### SEAL FACE MATERIAL

Carbon, Silicon Carbide, Tungsten Carbide, Ceramic (99.5%), Stellite.

#### SECONDARY SEALING

E.P.D.M., TTV, GFT, SILICON, VITON, PTFE, NEOPRENE.

#### METAL COMPONENTS

E.P.D.M., TTV, GFT, SILICON, VITON, PTFE, NEOPRENE.

## METAL BELLOW



### FEATURES

Maintenance free, Leak Proof, Optimum thickness, Inside Mounted

### OPERATING LIMITS

SHAFT DIA	19mm to 100mm
PRESSURE	15 bar (max)
TEMPERATURE	-50C to 350C
SPEED	3200 RPM(max)

### SEAL FACE MATERIAL

Carbon, Silicon Carbide, Tungsten Carbide, Ceramic (99.5%), Stellite.

### SECONDARY SEALING

TTV, GFT, SILICON, VITON, PTFE, GRAFOIL

### METAL COMPONENTS

SS 316 / SS 304 / Alloy 20 / Hastelloy C

### FEATURES

High performance, It can tolerate reversible pressure.

### OPERATING LIMITS

SHAFT DIA	25mm to 100mm
PRESSURE	Upto 25 kg/cm <sup>2</sup>
TEMPERATURE	-40°C to 280°C
SPEED	RPM subject to specification

### SEAL FACE MATERIAL

Carbon, Silicon Carbide, Tungsten Carbide, Ceramic (99.5%), Stellite.

### SECONDARY SEALING

FEP / FKM / NBR / Chemraz / PTFE / TTV / Karlez

### METAL COMPONENTS

SS 316 / SS 304 / Alloy 20 / Hastelloy C

## CARTRIDGE SEAL



## DOUBLE CARTRIDGE



### FEATURES

Slurry seal, Standardized modular design, Single Acting Mechanical seal, inside, Mounted

### OPERATING LIMITS

SHAFT DIA	20mm to 80mm
PRESSURE	Full Vacuum to 8 bar
TEMPERATURE	-30 o to 260o
SPEED	3000 RPM(max)

### SEAL FACE MATERIAL

Carbon, Silicon Carbide, Tungsten Carbide, Ceramic (99.5%), Stellite.

### ELASTOMER

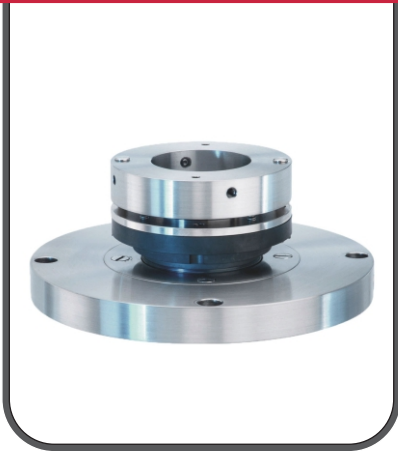
Viton, TTV, FEP and FFKM

### MOC

SS 316, Change of MOC on request



## DRY MECHANICAL



### FEATURES

Maintenance free, Leak Proof, Optimum thickness, Inside Mounted

### OPERATING LIMITS

**PRESSURE** 10 bar (Full vacuum)  
**TEMPERATURE** -20C to 120C  
**SPEED** 4000 RPM(max)

### SEAL FACE MATERIAL

Carbon, Silicon Carbide,  
 Tungsten Carbide,  
 Ceramic (99.5%),  
 Stellite.

### SECONDARY SEALING

FKM, TTV, GFT, SILICON, VITON, PTFE, CHEMARAZ.

### METAL COMPONENTS

SS 316 / SS 304 / Alloy 20 / Hastelloy C

### FEATURES

Maintenance free, Leak Proof, Optimum thickness, Inside Mounted

### OPERATING LIMITS

**SHAFT DIA** 100mm to 250mm  
**PRESSURE** Upto 25 kg/cm<sup>2</sup>  
**TEMPERATURE** -40C to 280C  
**SPEED** 2900 RPM(max)

### SEAL FACE MATERIAL

Carbon, Silicon Carbide,  
 Tungsten Carbide,  
 Ceramic (99.5%),  
 Stellite.

### SECONDARY SEALING

E.P.D.M., TTV, GFT, SILICON, VITON, PTFE, NEOPRENE.

### METAL COMPONENTS

E.P.D.M., TTV, GFT, SILICON, VITON, PTFE, NEOPRENE.

## AGITATOR



## REACTOR SEAL



### FEATURES

Maintenance free, Leak Proof, Optimum thickness, Inside Mounted

### OPERATING LIMITS

**SHAFT DIA** 25mm to 150mm  
**PRESSURE** 35bar  
**TEMPERATURE** -20C to 180C  
**SPEED** upto 600RPM(max)

### SEAL FACE MATERIAL

Carbon, Silicon Carbide,  
 Tungsten Carbide,  
 Ceramic (99.5%),  
 Stellite.

### SECONDARY SEALING

E.P.D.M., TTV, GFT, SILICON, VITON, PTFE, NEOPRENE.

### METAL COMPONENTS

SS 316 / SS 304 / Alloy 20 / Hastelloy C

## ROTARY JOINT - Mono Flow



### FEATURES

Maintenance free, Leak Proof, Optimum thickness, Inside Mounted

#### OPERATING LIMITS

SHAFT DIA	0.5" to 2.5"
PRESSURE	0 to 5 kg
TEMPERATURE	-20C to 180C
SPEED	3000 RPM(max)

#### SEAL FACE MATERIAL

Carbon, Silicon Carbide, Tungsten Carbide, Ceramic (99.5%), Stellite.

#### SECONDARY SEALING

E.P.D.M., TTV, GFT, SILICON, VITON, PTFE, NEOPRENE.

#### METAL COMPONENTS

SS 316 / SS 304 / Alloy 20 / Hastelloy C

### FEATURES

Maintenance free, Leak Proof, Optimum thickness, Inside Mounted

#### OPERATING LIMITS

SHAFT DIA	0.5" to 2.5"
PRESSURE	0 to 5 kg
TEMPERATURE	-20C to 180C
SPEED	3000 RPM(max)

#### SEAL FACE MATERIAL

Carbon, Silicon Carbide, Tungsten Carbide, Ceramic (99.5%), Stellite.

#### SECONDARY SEALING

E.P.D.M., TTV, GFT, SILICON, VITON, PTFE, NEOPRENE.

#### METAL COMPONENTS

SS 316 / SS 304 / Alloy 20 / Hastelloy C

## ROTARY JOINT - Dual Flow



## ROTARY JOINT - High Temp



### FEATURES

Maintenance free, Leak Proof, Optimum thickness, Inside Mounted

#### OPERATING LIMITS

SHAFT DIA	0.5" to 2.5"
PRESSURE	0 to 5 kg
TEMPERATURE	-20C to 180C
SPEED	3000 RPM(max)

#### SEAL FACE MATERIAL

Carbon,

#### SECONDARY SEALING

E.P.D.M., TTV, GFT, SILICON, VITON, PTFE, NEOPRENE.

#### METAL COMPONENTS

SS 316 / SS 304 / Alloy 20 / Hastelloy C

## What We Do



### CUSTOM ENGINEERING

Use Salson Seals critical components to increase your system mean time between failures for your pumps, dryers, compressors, agitators, bead mills, boiler feed water systems, sanitary systems, potable or treated water systems.



### ONSITE SUPPORT

Our onsite service includes inspection service, retrofitting, and mobile service. This allows us to set up a service unit on our customer's premises. The vehicles are equipped with the necessary range of seals, and are supported by qualified staff.



### CUSTOM DESIGNED SEALS

Salson custom builds extremely reliable mechanical seals that can dramatically increase the operating hours of your rotating equipment. Our top notch application engineering team designs mechanical seals to your requirements.



### MECHANICAL SEAL REPAIR

We can repair any make or style of mechanical seal as well as rotary union seals. Salson staff thoroughly inspect all repairable seals and will provide inspection reports with pictures when requested.



### CARBON, SPLIT CARBON SEALS

Carbon, Split Carbon Seals care provides all types of carbon seals, carbon bushes according to customer's needs. We use imported carbon for high sustainability. We offer split seals & carbon seal rings as well.



### TESTING & INSPECTION

We have in-house test bed at factory for running performance of each and every seals. Every seals is tested with hydraulic pressure for mechanical seal, volute casing and casing cover.

## Quality Assurance

We have been consistently maintaining the quality of our products.



Quality is of prime concern to our business and therefore we have established a well-defined system of quality control, where strict vigil is maintained at every stage of product development. We have a team of quality controllers, who check the quality for our products at every stage, right from procurement of raw materials to the delivery of the finished products. Our products are duly checked for several physical and chemical characteristics in our in-house laboratory, before they are ready for dispatch.



## Industries we serve

- PETROCHEMICALS
- PHARMACEUTICALS
- OIL REFINERIES
- CHEMICAL PLANT
- TEXTILES
- DAIRY PLANT

○ Get In Touch ○



**SALSON**<sup>TM</sup>  
SEALS

**Mechanical Seals Manufacturer**

Plot No 1873, Green City Road,  
Post - Pirojpura, Ta- Vadgam  
Dist - Banaskantha, 385210  
Gujarat, India

+91 97273 01284  
info@salsonseals.com  
www.salsonseals.com

Follow us

